



MUSTANG

2015



Go Further

Thank you for your interest in the **2015 Ford Mustang**. Included in this brochure you'll find information about:

PERFORMANCE: The all-new Mustang roars onto the scene with three engines. Muscular 5.0L V8 with increased power over the previous V8. Responsive 3.7L V6 delivering an ideal balance of power and efficiency. And all-new 310-horsepower 2.3L EcoBoost®.

DESIGN: The all-new Mustang honors what Mustang has always been and always will be, while boldly charging into new aesthetic territory, confidently staking its place in the long line of storied Ford legends. It all begins with the brand-new, vintage-style fastback.

HANDLING: With the new, smaller-diameter steering wheel, you'll be taking control of all-new front and rear suspensions and the Selectable-Effort Electric Power-Assist Steering (EPAS) that lets you choose from three settings: comfort, sport and standard.

TECHNOLOGY: An array of advanced technology features enhances the all-new Mustang driving experience. Intelligent Access with push-button start and available SYNC® with MyFord Touch®, to name a few, help make things easier and keep you connected.

DEALER INFORMATION

Find up-to-date contact information for your local Ford dealer. To visit a local dealer Web site and view a map of their location, click on one of the links below.

Hubler Ford Center, Inc.	2605 E. State Road 44 Shelbyville, IN 46176	(317) 392-2557
Matlock Ford	2140 N Morton Franklin, IN 46131	(800) 987-3673
Ray Skillman Ford, Inc.	1300 South U.S. 31 Greenwood, IN 46143	(317) 885-9800
Inskeep Ford	2651 West Main Street Greenfield, IN 46140	(317) 462-1470

Get an inside look at the benefits of Ford ownership. Manage important vehicle information 24/7, whenever you need it. It's free to register for personalized maintenance schedules, incentives and offers, and much more. You can even access your Ford Credit information and online bill payment services. Log on to www.owner.ford.com to get started.

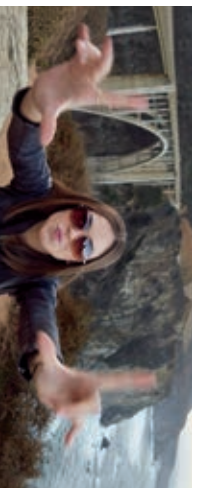




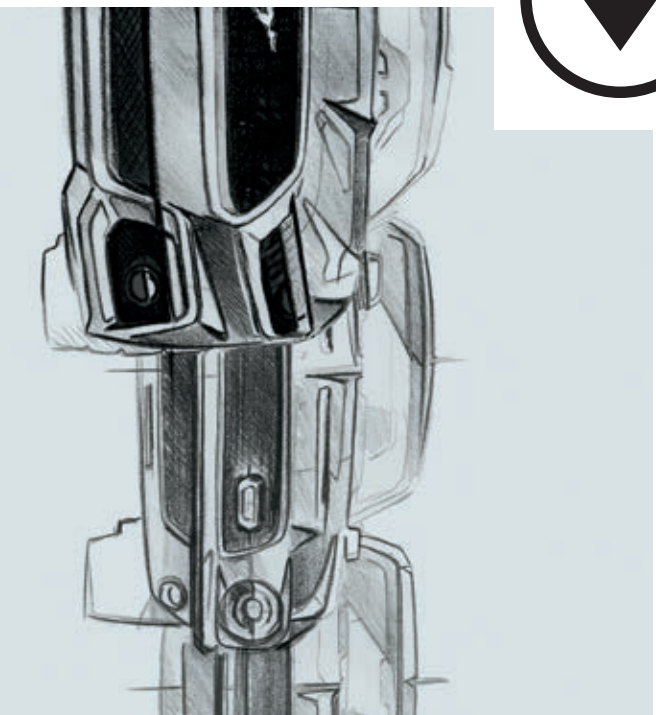
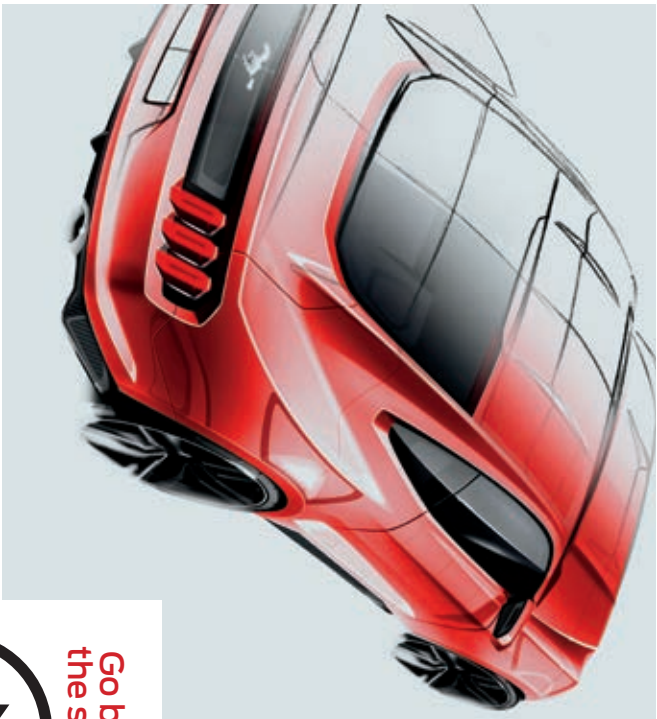
Your wildest dreams.



Just got real.
Click to see more of the
all-new Mustang.



GT Premium. Fastback. Ingot Silver. Available equipment.



EVOLUTION OF AN ICON.

Forward-leaning. Hard-charging. Free-breathing. And incredibly streamlined. A bold new interpretation of America's legendary pony car. The all-new 2015 Ford Mustang hits the pavement running – sleeker and more agile than ever.

Designers were challenged to create the most aerodynamic Mustang yet, while giving it an even more aggressive stance. Painstakingly sketched and sculpted, its form was relentlessly refined.

Engineers thoroughly tested the car's performance using advanced technology in the lab and on the track, then provided the designers with feedback.

Performance is enhanced by subtle elements like the wheel aero curtains – vertical slots at the outer edges of the front fascia. They create a high-pressure region that holds airflow closer to the body and minimizes drag.

Fastback or convertible, the all-new Mustang is our most advanced yet. The stunning result of form and function flowing seamlessly together. A world-class design. Ready to be unleashed on the world.



Go Further

2015 **MUSTANG**
ford.com

4.35-HORSEPOWER¹ HIGH.



GT Premium, Fastback, Race Red. Available equipment.
¹Using 93-octane fuel.

2015 **MUSTANG**
ford.com



320 LB.-FT.¹ OF GET-UP-AND-GONE.



*EcoBoost® Premium. Convertible. Magnetic. Dark Saddle leather trim.
Using 93-octane fuel.*

2015 **MUSTANG**
ford.com





FASTBACK. FAST FORWARD.

V6, Fastback. Triple Yellow Tri-Coat. Available equipment.

2015 **MUSTANG**
ford.com





Mustang GT

5.0L V8: New cylinder heads with revised high-flow ports help air flow more freely for better high-rpm breathing than last year

6-speed manual or SelectShift® automatic¹ transmission

25 mpg²
435³ hp and 400³ lb.-ft. of torque

Mustang EcoBoost®

2.3L EcoBoost: Twin-scroll turbocharger optimized for quick acceleration response

6-speed manual or SelectShift automatic¹ transmission

32 mpg²
310³ hp and 320³ lb.-ft. of torque

Mustang V6

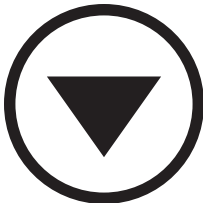
3.7L V6: All-aluminum DOHC with Ti-VCT helps deliver low-end torque, peak power and increased efficiency

6-speed manual or SelectShift automatic¹ transmission

28 mpg²
300 hp and 280 lb.-ft. of torque

POWER PLAYERS.

Get your GT ringtone



Every member of the 2015 Mustang family makes a powerful impression. There's the deep-throated rumble of the GT with its legendary 5.0L. The turbocharged responsiveness of the all-new EcoBoost. And the tried-and-true 300-hp V6. Whether you go for a short-throw manual or a SelectShift automatic,¹ it's time to put your dream Mustang in gear.

The fastest GT ever packs a more potent V8 under its hood thanks to inspiration from the previous generation's Boss® 302 engine.

Best-in-class 1-4 fuel efficiency⁴ horsepower and torque can all be yours with the 2.3L EcoBoost. Its twin-scroll turbocharger and direct-injection technology deliver all around.

¹Available feature. ²EPA-estimated ratings: 16 city/25 hwy/19 combined mpg, 5.0L Auto fastback, actual mileage will vary; 19 city/28 hwy/22 combined mpg, 3.7L Auto fastback, actual mileage will vary; 31 city/32 hwy/25 combined mpg, 2.3L EcoBoost Auto fastback, Actual mileage will vary. Class is High-Power Sports Cars.



DROP IN. REV UP.

Lower yourself into the sporty new driver's seat. Put your foot down. And let the adrenaline flow. Nothing compares to this rush. It's pure magic. Conjured by the all-new Mustang. A love-at-first-sight, want-you-so-bad, feels-so-good kind of car. One drive. And you're hooked.

The carefully crafted new interior welcomes all drivers. The steering column tilts *and* telescopes. Your footrest and accelerator angles match. The shifter's right where it should be for open access to controls (and cupholders). Plus, the front seats travel farther than in the previous model. And there's more knee room. All that's missing is you.

GT Premium. Convertible. Magnetic. Dark Saddle leather trim. Available equipment.

2015 **MUSTANG**
ford.com





TALKS THE TALK.

And walks the walk. Mustang backs its hot new look with cool technology. Voice-activated Ford SYNC®¹ with 911 Assist® comes standard. So you can enjoy hands-free calls, Bluetooth®-streaming music and more with simple voice commands.

Once paired, it can download contacts and play music from your smartphone. It can also access your MP3 player, USB or iPod®.

Just touch a button on the steering wheel and say things like "Call: Melanie at home" or "Play playlist: Roadtrip."

Control apps by voice too, such as Pandora®, iHeartAuto™ and the SiriusXM® App, with SYNC Applink.™² Mustang makes it easy for you to stay connected and entertained. SYNC. Say the word.

| SYNC

GT. Fastback. Ebony cloth trim.

¹Driving while distracted can result in loss of vehicle control. Only use mobile phones and other devices, even with voice commands, when it is safe to do so. Not all features are compatible with all phones. ²SYNC Applink is available on select models and compatible with select smartphone platforms. SYNC Applink is not compatible with MyFord Touch®. Commands may vary by phone and Applink software.

2015 **MUSTANG**
ford.com





ROCKS THE COCKPIT.

With an all-new look and awesome new functionality, Voice-activated SYNC^{®1} with MyFord Touch^{®1,2} gives you voice and touch control over your phone, entertainment, navigation² and climate. And that's just the beginning.

For amazing sound, the 12-speaker Shaker[™] Pro Audio System² is teamed with HD Radio[™] Technology.² Easy iTunes[®] tagging² means you just touch the TAG shopping cart icon while a song is on to mark it for purchase later.

HD Radio[®]
Digital AM & FM

((siriusxm))

SiriusXM[®] Satellite Radio² lets you enjoy commercial-free music, plus sports, news, entertainment, and every premium channel with your 6-month All Access trial subscription.³ The voice-activated Navigation System² also includes a 5-year subscription to SiriusXM Traffic and Travel Link[®] services. These features provide detailed traffic information on accidents, construction and road closures, plus local and national weather forecasts, fuel prices and more.

GT Premium. Fastback. Ebony leather trim. GT Performance Package.

Driving while distracted can result in loss of vehicle control. Only use SYNC/MyFord Touch/other devices, even with voice commands, when it is safe to do so. Some features may be locked out while the vehicle is in gear. Not all features are compatible with all phones. ²Available feature. ³Trial subscription also includes access to SiriusXM Internet Radio on your computer, smartphone or tablet. Satellite and Internet Radio lineups vary slightly.

2015 **MUSTANG**
ford.com



SENSES DANGER. LIKE A SUPERHERO.

High-speed passing. Crowded lots. Tight driveways. Long runs down the highway. The all-new Mustang offers advanced driver-assist technologies¹ with sophisticated sensors that can help you out in all these challenging real-world moments and more.

Stay alert to traffic detected in blind spots as you drive forward, or traffic nearing either side of the vehicle as you slowly back up, thanks to BLIS[®] (Blind Spot Information System) with cross-traffic alert.¹ BLIS helps warn you using lights embedded in the sideview mirrors.² Cross-traffic alert uses the same lights, plus an audio warning and a message center notice.

Get a heads-up from adaptive cruise control and collision warning with brake support.¹ This system helps maintain your choice of 4 preset gaps from the vehicle in front of you and can alert you to a potential collision. If one is detected, it flashes a warning on the windshield, sounds an alarm, and helps by pre-charging the brake system.



GT Premium. Fastback. Ruby Red Tinted Clearcoat Metallic. Available equipment.

¹Available feature. Driver-assist features are supplemental and do not replace the driver's attention, judgment and need to control the vehicle. ²BLIS replaces standard integrated blind spot mirrors.



Watch the
new top drop



AND TRANSFORMS FASTER THAN EVER.

The all-new Mustang convertible drops its top nearly twice as fast as the previous generation. Engineered as a convertible from the start, it's designed to deliver a smoother ride and better handling than before. It also has a lower liftover height and best-in-class trunk space.

Go topless in seconds by simply releasing the new centrally located top latch and pressing a button. With the new electric drive system, you'll enjoy quieter top operation this year too.

Convertible life is easier than ever with thoughtful touches like the new tonneau caps that slide easily in place to help give the lowered top a sleek finish.

To perfect its top-down look, the convertible sports exclusive design cues that set it apart from the fastback. Note the higher, straighter muscle line across its rear haunches. And its distinctively contoured trunk lid. The all-new 2015 Mustang convertible — our best one yet.

GT Premium. Convertible. Deep Impact Blue. Ebony leather trim. Available equipment.



GT Premium, Fastback, Triple Yellow Tri-coat, GT Performance Package.

2015 **MUSTANG**
ford.com





IT'S INDEPENDENCE DAY.

Pulls 0.98 lateral g! Our best-handling Mustang GT yet is ready for action. In fact, it's already proven itself in our most rigorous testing – logging more than 2.5 million miles.

Holds the road better than ever thanks in part to its all-new, fully independent, integral-link rear suspension. Based on a lower H-arm, a vertical link, an upper camber link and a toe link, this new setup helps Mustang deliver 2x better anti-squat and nearly 10x better anti-lift properties than its previous generation. Which gives it better pitch control during hard acceleration and braking.

For even more grip, unsprung mass is kept down by the use of high-strength aluminum alloy for the rear knuckles and H-arms.

Better road feel, a better ride, and more precise handling are just a few more benefits of the all-new suspension system, which incorporates a new double-ball-joint configuration up front as well.

The most capable brake lineup ever offered on a Mustang brings it all to a stop faster than you can say “let’s go.”



Go Further

2015 **MUSTANG**
ford.com

Pre-production vehicles shown.

Mustang GT with GT Performance Package figure based on internal Ford testing data.



NOTHIN' BUT SMOKE IN YOUR MIRRORS.

When it's time to hit the track, leave the competition in your wake with new Electronic Line-Lock.^{1,2} Exclusive to GT models, it's activated using Mustang Track Apps.^{™2} And its sole purpose is to prep your tires for the big win.

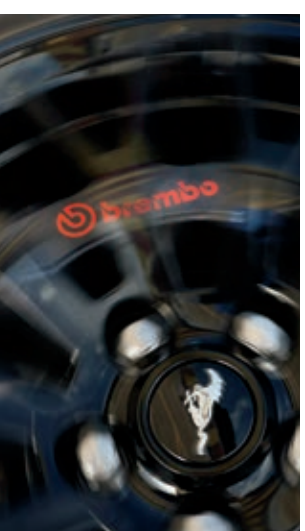
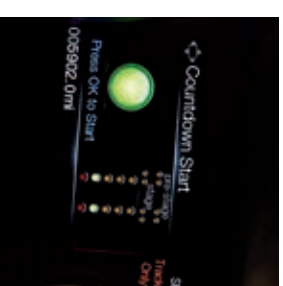
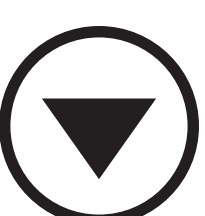
For customized steering feedback, the selectable-effort electric power-assist steering offers you 3 modes (Standard, Sport and Comfort) in the Steering Feel menu.

An iconic "Christmas tree" offers accurate countdown starts. You can also monitor g-forces, braking times and acceleration times in quarter-mile, 0-60 and more, all within the Track Apps.²

Serious stopping power is built into the GT Performance Package: 6-piston Brembo[™] front calipers bite down on 15" vented rotors.³ Then it's go-time again.



Learn how to
light 'em up



GT Premium, Fastback, Black. Available equipment.

Vehicle shown on closed course with professional driver. Obey all laws. ¹Available feature. ²Track use only. ³Manual transmission only.

2015 **MUSTANG**
ford.com



Go Further

RACERS: TAP THIS.

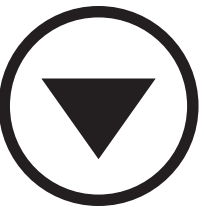
The all-new Mustang serves up hot new technology designed specifically for you. Next time the track starts getting slick, just tap a toggle switch on the dash to adjust its Selectable Drive Modes.¹ And keep going.

Choose from 4 modes: Normal, Sport+, Track, and Snow/Wet. Each one activates predefined powertrain and chassis calibrations suited to that particular driving situation.

See modes in action

Normal mode delivers a balance of comfort and responsive handling for an engaging driving experience.

Sport+ mode provides more responsive steering and throttle response, plus different shift points if your Mustang is equipped with the SelectShift[®] automatic transmission. It's great for more spirited driving on twisty roads.



Track mode, which is for track use only, allows skilled drivers to push the car closer to its limits on the track before AdvanceTrac[®] electronic stability control intervenes. It's perfect for weekend track days and autocrosses because it lets you extract the absolute maximum from the vehicle.

Snow/Wet mode comes in handy when road conditions take a turn for the worse. It provides confident handling by retaining a connected-to-the-road feel without sacrificing any of the inherent composure of your new Mustang.



*EcoBoost[®] Premium. Fastback. Race Red. Available equipment.
¹Available feature.*

2015 **MUSTANG**
ford.com



TRACK STAR.

While developing the GT Performance Package for the all-new Mustang GT, engineers used the previous generation's Boss® 302 model as their performance benchmark. This new race-ready machine is even faster around the track.

Getting it done starts with the underpinnings. The package gives you a strut-tower brace, a K-brace, heavy-duty front springs, an upsized rear sway bar, a larger radiator, a 3.73 TORSSEN® rear axle and a whole lot more. See the Specs for the full rundown.





TOP GEAR.

Get your Mustang on. Wearables. Wall art. Pinball machines. Drinkware. And golf cars. Even a pedal kart for the kids. All things Mustang can be found on the Ford Official Licensed Product site. For a limited time, you can even peruse a special Mustang Fifty Years Collection. There you'll find lots of unique ways to mark the occasion.

Shop today at ShopFordMerchandise.com



PEAK PERFORMANCE.

When you're ready to take your Mustang to the next level, look no further than Ford Racing Performance Parts. Using a convenient Mustang tool on the site, you can select your model year to view the full list of currently available equipment. You'll find everything from brakes to a supercharger, suspension, wheels and more. All expertly engineered to set your Mustang apart.

Learn more at fordracingparts.com



MUSTANG SPECIFICATIONS



GT 50 Years Limited Edition. Wimbledon White. See your Ford Dealer for details.

Engines/EPA-Estimated Ratings¹ & Dimensions

3.7L Ti-VCT V6	
300 hp @ 6,500 rpm	
280 lb.-ft. of torque @ 4,000 rpm	
6-speed manual	
17 city/28 hwy/21 combined mpg	
6-speed SelectShift [®] automatic	
19 city/28 hwy/22 combined mpg	
2.3L EcoBoost[®] I-4	
310 hp @ 5,500 rpm ²	
320 lb.-ft. of torque @ 3,000 rpm ²	
6-speed manual	
22 city/31 hwy/26 combined mpg	
6-speed SelectShift automatic	
21 city/32 hwy/25 combined mpg	
5.0L Ti-VCT V8	
435 hp @ 6,500 rpm ²	
400 lb.-ft. of torque @ 4,250 rpm ²	
6-speed manual	
15 city/25 hwy/19 combined mpg	
6-speed SelectShift automatic	
16 city/25 hwy/19 combined mpg	

Exterior	Fastback/Convertible
Wheelbase	107.1"
Length	188.3"
Height	54.4"/54.9"
Width – Excluding mirrors	75.4"
Width – Including mirrors	81.9"
Interior – Front	
Head room	37.6"
Shoulder room	56.3"
Hip room	54.9"
Leg room	44.5"
Interior – Rear	
Head room	34.8"/35.7"
Shoulder room	52.2"/44.7"
Hip room	47.4"/43.7"
Leg room	30.6"/30.8"
Capacities (cu. ft.)	
Passenger volume	84.5/80.8
Luggage capacity	13.5/11.4
Total interior volume	98.0/92.2
Fuel tank (gal.)	16.0
V6/V8	15.5
I-4	



Standard Features

Mechanical	
4-wheel vented disc Anti-Lock Brake System (ABS)	
Selectable-effort electric power-assisted steering (Standard, Sport, Comfort)	
Suspension – Front: independent double-ball-joint MacPherson strut with stabilizer bar	
Suspension – Rear: independent integral link with stabilizer bar	
Tire mobility kit	
Seating	
4-way adjustable front head restraints	
50/50 split-fold rear seat (fastback only)	
Front bucket seats	
Interior	
12-volt powerpoints (2)	
Auto-dimming rear view mirror	
Carpeted front floor mats	
Cruise control	
Full center floor console with storage bin	
Illuminated locking glove compartment	
Intelligent Access with push-button start	
Leather-wrapped steering wheel and parking brake handle	
Power door locks	
Power windows with global open and one-touch-up/-down feature (one-touch-up fastback only)	
Rear view camera	
Steering wheel-mounted cruise, audio and 5-way controls	
Sun visors with illuminated vanity mirrors	
Sunglasses storage bin	
Tilt/telescoping steering column	
Exterior	
Automatic headlamps with wiper activation	
Easy Fuel [®] capless fuel filler	
Embedded radio antenna (fastback only)	
HID headlamps with signature lighting	
LED taillamps with sequential turn signals	
Rear-window defroster	
Sidewindow mirrors with integrated blind spot mirrors	
Windshield wipers – Variable-intermittent	
Safety & Security	
Personal Safety System [™] with dual-stage front airbags ³	
Active Knee-Airbag Glovebox ³	
AdvanceTrac [®] electronic stability control	
Belt-Minder [®] front safety belt reminder	
Driver's knee airbag ³	
Front-seat side airbags ³	
Illuminated Entry System	
Individual Tire Pressure Monitoring System (excludes available spare)	
LATCH – Lower Anchors and Tether Anchors for Children	
MyKey [®]	
Perimeter alarm	
Safety belt restraint system – Manual 3-point shoulder and lap safety belt system for all seating positions	
SecurLock [®] Passive Anti-Theft System	
Side-curtain airbags ³ (fastback only)	
SOS Post-Crash Alert System [™]	

Dimensions may vary by trim level. Actual mileage will vary. EPA-estimated ratings for fastback models only. Convertible ratings not available at time of release. ²Using 93-octane fuel. ³Always wear your safety belt and secure children in the rear seat.



Ebony cloth trim. Available equipment.

Tri-bar Pony badge on gloss-black-finished trunk lid.

LED taillamps with sequential turn signals.

Intelligent Access with push-button start.

HID headlamps with signature lighting.



17" Sparkle Silver-Painted Aluminum Standard V6



18" Foundry Black-Painted Aluminum Included: 051A

V6

Equipment Group 050A

Includes all standard features. Plus:

Mechanical

3.7L Ti-VCT V6 engine

6-speed manual transmission

3.15:1 gear ratio with limited-slip rear differential

Seating

4-way manually adjustable driver's seat with height adjustment

2-way manually adjustable front-passenger seat

Cloth seats

Interior

AM/FM stereo/single-CD player with 6 speakers

Ford SYNC® enhanced voice recognition communications and entertainment system with 4.2" color LCD display in center stack, Applink™, 911 Assist®, and 2 smart-charging USB ports

Auxiliary audio input jack

Single-zone manual air conditioning

Track Apps™ located in instrument cluster

Exterior

17" Sparkle Silver-painted aluminum wheels with P235/55R17 all-season tires

Black cloth top on convertible

Body-color power sideview mirrors

Dual bright slashed-cut exhaust tips

Available Equipment Group

Equipment Group 051A – Blade-style decklid spoiler, 6-way power driver's seat with power lumbar, LED fog lamps, and 18" Foundry Black-painted aluminum wheels

Available Options & Package

3.55:1 gear ratio with limited-slip rear differential

6-speed SelectShift® automatic transmission with steering wheel-mounted paddle shifters and Remote Start System

All-weather floor mats

Enhanced Security Package includes electronic locking center console, Active Anti-Theft System, electronic steering column lock and wheel locks

Reverse Sensing System

Spare wheel and tire

Spoiler delete (051A only)

EcoBoost®1

Equipment Group 100A <i>Includes select 1/6 features, plus:</i>	Equipment Group 200A <i>Includes select EcoBoost features, plus:</i>
Mechanical 2.3L EcoBoost 1-4 engine 3.3:1 gear ratio with limited-slip rear differential Active noise cancellation	Mechanical Selectable Drive Modes with 4-gang toggle switch pack (Normal, Sport+, Track, Snow/Wet)
Seating 6-way power driver's seat with power lumbar 6-way power front-passenger seat	Seating Heated and cooled front seats Leather-trimmed seats
Interior Diamond-mesh aluminum dash panel	Interior Aluminum brake and accelerator pedals Ambient lighting AM/FM stereo/single-CD player with 9 speakers and amplifier Bright-finish door speaker surrounds Dual-zone electronic automatic temperature control Illuminated door-sill plates Premium door-trim panel inserts Satin Brush aluminum dash panel SiriusXM® Satellite Radio with 6-month trial subscription SVN® with MyFord Touch® voice-activated, in-vehicle connectivity system with 8" color LCD touch screen in center stack and media hub with USB port Universal garage door opener
Exterior Blade-style decklid spoiler LED fog lamps	Exterior 18" Magnetic-painted machined aluminum wheels with P235/50R18 all-season tires Body-color power, heated sideview mirrors with integrated turn signal indicators Pony projection lamps Rear diffuser
Available Options & Packages 6-speed SelectShift® automatic transmission with steering wheel-mounted paddle shifters, 3.15:1 gear ratio with limited-slip rear differential, and Remote Start System	Available Equipment Group Equipment Group 201A – Shaker™ Pro Audio System with 12 speakers and amplifier, HD Radio™ technology, driver's seat and sideview mirror memory feature, and BLIS® (Blind Spot Information System) with cross-traffic alert
18" Foundry Black-painted aluminum wheels with 235/50R18 all-season tires (n/a with EcoBoost Performance Package or Wheel & Stripe Package)	Available Options & Packages 6-speed SelectShift automatic transmission with steering wheel-mounted paddle shifters and Remote Start System
All-weather floor mats	18" Foundry Black-painted aluminum wheels with 235/50R18 all-season tires (n/a with 50 Years Appearance Package or EcoBoost Performance Package)
EcoBoost Performance Package includes unique front air splitter; larger radiator; upsized rear sway bar; heavy-duty front springs; unique chassis tuning; larger brake rotors with 4-piston calipers; 19" Ebony Black-painted aluminum wheels with 255/40R19 summer-only tires; unique electric power-assisted steering, ABS and electronic stability control tuning; Engine Turn aluminum dash panel; Gauge Pack (oil pressure and boost); spoiler delete; and 3.5:1 gear ratio with limited-slip rear differential (n/a with 18" wheels, spare tire or Wheel & Stripe Package)	
Enhanced Security Package includes electronic-locking center console, Active Anti-Theft System, electronic steering column lock and wheel locks	
RECARO® Ebony sport cloth seats with manual adjustment	
Reverse Sensing System	
Spare wheel and tire (n/a with EcoBoost Performance Package)	
Spoiler delete	
Wheel & Stripe Package includes side stripes and 19" low-gloss Black-painted machined aluminum wheels with 255/40R19 all-season tires (n/a with 18" wheels or EcoBoost Performance Package)	

EcoBoost Premium

Equipment Group 100A <i>Includes select EcoBoost features, plus:</i>	Equipment Group 200A <i>Includes select EcoBoost features, plus:</i>
Mechanical Selectable Drive Modes with 4-gang toggle switch pack (Normal, Sport+, Track, Snow/Wet)	Mechanical Selectable Drive Modes with 4-gang toggle switch pack (Normal, Sport+, Track, Snow/Wet)
Seating Heated and cooled front seats Leather-trimmed seats	Seating Heated and cooled front seats Leather-trimmed seats
Interior Aluminum brake and accelerator pedals Ambient lighting AM/FM stereo/single-CD player with 9 speakers and amplifier Bright-finish door speaker surrounds Dual-zone electronic automatic temperature control Illuminated door-sill plates Premium door-trim panel inserts Satin Brush aluminum dash panel SiriusXM® Satellite Radio with 6-month trial subscription SVN® with MyFord Touch® voice-activated, in-vehicle connectivity system with 8" color LCD touch screen in center stack and media hub with USB port Universal garage door opener	Interior Aluminum brake and accelerator pedals Ambient lighting AM/FM stereo/single-CD player with 9 speakers and amplifier Bright-finish door speaker surrounds Dual-zone electronic automatic temperature control Illuminated door-sill plates Premium door-trim panel inserts Satin Brush aluminum dash panel SiriusXM® Satellite Radio with 6-month trial subscription SVN® with MyFord Touch® voice-activated, in-vehicle connectivity system with 8" color LCD touch screen in center stack and media hub with USB port Universal garage door opener
Exterior 18" Magnetic-painted machined aluminum wheels with P235/50R18 all-season tires Body-color power, heated sideview mirrors with integrated turn signal indicators Pony projection lamps Rear diffuser	Exterior 18" Magnetic-painted machined aluminum wheels with P235/50R18 all-season tires Body-color power, heated sideview mirrors with integrated turn signal indicators Pony projection lamps Rear diffuser
Available Options & Packages 6-speed SelectShift automatic transmission with steering wheel-mounted paddle shifters and Remote Start System	Available Options & Packages 6-speed SelectShift automatic transmission with steering wheel-mounted paddle shifters and Remote Start System
18" Foundry Black-painted aluminum wheels with 235/50R18 all-season tires (n/a with 50 Years Appearance Package or EcoBoost Performance Package)	18" Foundry Black-painted aluminum wheels with 235/50R18 all-season tires (n/a with 50 Years Appearance Package or EcoBoost Performance Package)

20" x 9" Foundry Black-painted machined aluminum wheels with 265/35R20 summer-only tires ² (n/a with 50 Years Appearance Package or EcoBoost Performance Package)	20" x 9" Foundry Black-painted machined aluminum wheels with 265/35R20 summer-only tires ² (n/a with 50 Years Appearance Package or EcoBoost Performance Package)
50 Years Appearance Package³ includes 50 Years grille with bright surround, 19" premium Luster Nickel-painted aluminum wheels with 255/40R19 all-season tires, unique rear gas cap badge, Axle Spin aluminum dash panel, and unique seat and door-trim panel inserts (n/a with optional wheels, Premier Trim With Color Accent Group, RECARO seats, or spoiler delete)	50 Years Appearance Package³ includes 50 Years grille with bright surround, 19" premium Luster Nickel-painted aluminum wheels with 255/40R19 all-season tires, unique rear gas cap badge, Axle Spin aluminum dash panel, and unique seat and door-trim panel inserts (n/a with optional wheels, Premier Trim With Color Accent Group, RECARO seats, or spoiler delete)
Adaptive cruise control and collision warning with brake support, and rain-sensing windshield wipers	Adaptive cruise control and collision warning with brake support, and rain-sensing windshield wipers
All-weather floor mats	All-weather floor mats
EcoBoost Performance Package¹ includes unique front air splitter; larger radiator; upsized rear sway bar (fastback only); heavy-duty front springs (fastback only); unique chassis tuning; larger brake rotors with 4-piston calipers; 19" Ebony Black-painted aluminum wheels with 255/40R19 summer-only tires ² ; unique electric power-assisted steering, ABS and electronic stability control tuning; Engine Turn aluminum dash panel; Gauge Pack (oil pressure and boost); spoiler delete; and 3.5:1 gear ratio with limited-slip rear differential (n/a with optional wheels)	EcoBoost Performance Package¹ includes unique front air splitter; larger radiator; upsized rear sway bar (fastback only); heavy-duty front springs (fastback only); unique chassis tuning; larger brake rotors with 4-piston calipers; 19" Ebony Black-painted aluminum wheels with 255/40R19 summer-only tires ² ; unique electric power-assisted steering, ABS and electronic stability control tuning; Engine Turn aluminum dash panel; Gauge Pack (oil pressure and boost); spoiler delete; and 3.5:1 gear ratio with limited-slip rear differential (n/a with optional wheels)
Enhanced Security Package¹ includes electronic-locking center console, Active Anti-Theft System, electronic steering column lock and wheel locks	Enhanced Security Package¹ includes electronic-locking center console, Active Anti-Theft System, electronic steering column lock and wheel locks
Premier Trim With Color Accent Group¹ includes Charcoal Black interior environment with color-accented seats and unique door-trim panel inserts (n/a with 50 Years Appearance Package)	Premier Trim With Color Accent Group¹ includes Charcoal Black interior environment with color-accented seats and unique door-trim panel inserts (n/a with 50 Years Appearance Package)
RECARO Ebony sport leather-trimmed seats with manual adjustment ⁴ (fastback only, n/a with 50 Years Appearance Package, heated and cooled front seats or memory feature)	RECARO Ebony sport leather-trimmed seats with manual adjustment ⁴ (fastback only, n/a with 50 Years Appearance Package, heated and cooled front seats or memory feature)
Reverse Sensing System	Reverse Sensing System
Spare wheel and tire (n/a with 20" wheels or EcoBoost Performance Package)	Spare wheel and tire (n/a with 20" wheels or EcoBoost Performance Package)
Spoiler delete	Spoiler delete
Voice-activated Navigation System with integrated SiriusXM Traffic and Travel Link® services with 5-year subscription	Voice-activated Navigation System with integrated SiriusXM Traffic and Travel Link® services with 5-year subscription
¹ Fastback only. ² Ford does not recommend using summer tires when temperatures drop to approximately 40°F or below (depending on tire wear and environmental conditions) or in snow/ice conditions. If the vehicle must be driven in these conditions, Ford recommends using all-season or winter tires. ³ When certain packages are ordered in combination with other packages, final content may vary. See your dealer for additional details.	¹ Fastback only. ² Ford does not recommend using summer tires when temperatures drop to approximately 40°F or below (depending on tire wear and environmental conditions) or in snow/ice conditions. If the vehicle must be driven in these conditions, Ford recommends using all-season or winter tires. ³ When certain packages are ordered in combination with other packages, final content may vary. See your dealer for additional details.



EcoBoost Premium, Ceramic leather trim, Available equipment

EcoBoost Premium, Premier Trim With Color Accent Group, Red Line

EcoBoost Premium, Heated and cooled front seats

EcoBoost, Wheel & Stripe Package



17" Sparkle Silver-Painted Aluminum Standard: EcoBoost



18" Magnetic-Painted Machined Aluminum Standard: EcoBoost Premium



18" Foundry Black-Painted Aluminum Optional



19" Ebony Black-Painted Aluminum Included: EcoBoost Performance Package



19" Low-Gloss Black-Painted Machined Aluminum Included: Wheel & Stripe Package



19" Premium Luster Nickel-Painted Aluminum Included: 50 Years Appearance Package



20" x 9" Foundry Black-Painted Machined Aluminum Optional: EcoBoost Premium



GT¹

Equipment Group 300A
Includes select EcoBoost® features, plus:

Mechanical

- 5.0L Ti-VC T V8 engine
- 3.31:1 gear ratio with limited-slip rear differential
- Electronic Line-Lock (track use only)
- Engine oil cooler
- Larger brake rotors with 4-piston calipers
- Launch control (manual transmission only)

Exterior

- 18" Magnetic-painted machined aluminum wheels with P235/50R18 all-season tires
- Dual bright rolled and polished exhaust tips
- Hood-vented air extractors
- Raised blade-style decklid spoiler

Available Options & Packages

- 3.35:1 gear ratio with limited-slip rear differential
- 6-speed SelectShift® automatic transmission with steering wheel-mounted paddle shifters, 3.15:1 gear ratio with limited-slip rear differential, and Remote Start System
- 18" Foundry Black-painted aluminum wheels with 235/50R18 all-season tires (n/a with GT Performance Package)
- All-weather floor mats

Enhanced Security Package includes electronic-locking center console, Active Anti-Theft System, electronic steering column lock and wheel locks

GT Performance Package

- Includes unique front air splitter, strut-tower brace, larger radiator, upsized rear sway bar, heavy-duty front springs, unique chassis tuning, Gauge Pack (oil pressure and vacuum), K-member brace, Brembo® 6-piston front calipers, 19" x 9" Ebony Black-painted aluminum front wheels with 255/40R19 summer-only tires², 19" x 9.5" Ebony Black-painted aluminum rear wheels with 275/40R14 summer-only tires², unique electric power-assisted steering, ABS and electronic stability control, tuning, Engine Turn aluminum dash panel, spoiler delete, and 3.73:1 gear ratio with TORSEN® helical gear differential (manual only, n/a with 18" wheels, spare wheel and tire, or spoiler delete)

- RECARO® Ebony sport cloth seats with manual adjustment
- Reverse Sensing System
- Spare wheel and tire (n/a with GT Performance Package)
- Spoiler delete



18" Magnetic-Painted Machined Aluminum Standard



18" Foundry Black-Painted Aluminum Optional



19" Ebony Black-Painted Aluminum Performance Package



19" Dark Stainless Premium Painted Aluminum Optional



19" Premium Luster Nickel-Painted Aluminum Included



20" x 9" Foundry Black-Painted Machined Aluminum Optional

GT Premium

Equipment Group 400A
Includes select GT features, plus:

Mechanical

- Selectable Drive Modes with 4-gang toggle switch pack (Normal, Sport+, Track, Snow/Wet)

Seating

- Heated and cooled front seats
- Leather-trimmed seats

Interior

- Aluminum brake and accelerator pedals
- Ambient lighting
- AM/FM stereo/single-CD player with 9 speakers and amplifier
- Bright-finish door speaker surrounds
- Dual-zone electronic automatic temperature control
- Illuminated door-sill plates
- Leather-wrapped parking brake handle
- Premium door-trim panel inserts
- Satin Brush aluminum dash panel
- SiriusXM® Satellite Radio with 6-month trial subscription
- SYNC® with MyFord Touch® voice-activated in-vehicle connectivity system with 8" color LCD touch screen in center stack and media hub with USB port
- Universal garage door opener

Exterior

- Body-color power, heated sideview mirrors with integrated turn signal indicators
- Pony projection lamps
- Rear diffuser

Available Equipment Group

Equipment Group 401A – Shaker™ Pro Audio System with 12 speakers and amplifier, HD Radio™ technology, driver's seat and sideview mirror memory feature, and BLIS® (Blind Spot Information System) with cross-traffic alert

Available Options & Packages

- 3.55:1 gear ratio with limited-slip rear differential
- 6-speed SelectShift automatic transmission with steering wheel-mounted paddle shifters, 3.15:1 gear ratio with limited-slip rear differential, and Remote Start System
- 18" Foundry Black-painted aluminum wheels with 235/50R18 all-season tires (n/a with 50 Years Appearance Package or GT Performance Package)



19" Dark Stainless Premium Painted Aluminum Optional



19" Premium Luster Nickel-Painted Aluminum Included



20" x 9" Foundry Black-Painted Machined Aluminum Optional

19" Dark Stainless premium painted aluminum wheels with 255/40R19 all-season tires (n/a with 50 Years Appearance Package or GT Performance Package)

20" x 9" Foundry Black-painted machined aluminum wheels with 265/35R20 summer-only tires² (n/a with GT Performance Package)

50 Years Appearance Package³ includes 50 Years grille with bright surround, 19" premium Luster Nickel-painted aluminum wheels with 255/40R19 all-season tires, unique rear gas cap badge, Axle Spin aluminum dash panel, and unique seat and door-trim panel inserts (n/a with optional wheels, RECARO seats, Premier Trim With Color Accent Group or spoiler delete)

Adaptive cruise control and collision warning with brake support, and rain-sensing windshield wipers

All-weather floor mats

Enhanced Security Package includes electronic-locking center console, Active Anti-Theft System, electronic steering column lock and wheel locks

GT Performance Package

- Includes unique front air splitter, strut-tower brace, larger radiator, upsized rear sway bar, heavy-duty front springs, unique chassis tuning, Gauge Pack (oil pressure and vacuum), K-member brace, Brembo 6-piston front calipers, 19" x 9" Ebony Black-painted aluminum front wheels with 255/40R19 summer-only tires², 19" x 9.5" Ebony Black-painted aluminum rear wheels with 275/40R14 summer-only tires², unique electric power-assisted steering, ABS and electronic stability control, tuning, Engine Turn aluminum dash panel, spoiler delete, and 3.73:1 gear ratio with TORSEN helical gear differential (fastback manual only, n/a with optional wheels)

Premier Trim With Color Accent Group³ includes Charcoal Black interior environment with color-accented seats and unique door-trim panel inserts (n/a with 50 Years Appearance Package)

RECARO Ebony sport leather-trimmed seats with manual adjustment (fastback only, n/a with 50 Years Appearance Package, heated and cooled front seats or memory feature)

Reverse Sensing System

Spare wheel and tire (n/a with 20" wheels or GT Performance Package)

Spoiler delete (n/a with 50 Years Appearance Package)

Voice-activated Navigation System with Integrated SiriusXM Traffic and Travel Link® services with 5-year subscription

¹Fastback only. ²Ford does not recommend using summer tires when temperatures drop to approximately 40°F or below (depending on tire wear and environmental conditions) or in snow/ice conditions. If the vehicle must be driven in these conditions, Ford recommends using all-season or winter tires. ³When certain packages are ordered in combination with other packages, final content may vary. See your dealer for additional details.

Exteriors



Oxford White



Ingot Silver



Triple Yellow Tri-coat



Competition Orange



Race Red



Ruby Red Tinted Clearcoat Metallic



Deep Impact Blue



Magnetic



Guard



Black

Exteriors

V6

EcoBoost®/GT

Interiors

EcoBoost-Premium/GT Premium

Oxford White

1

2 3 4

5 6 7 8 9 10 11

Ingot Silver

1

2 3 4

5 6 7 8 9 10 11

Triple Yellow Tri-coat¹

1

2 3 4

5 6 8 9 11

Competition Orange

1

2 3 4

5 6 8 9 11

Race Red

1

2 3 4

5 6 8 9 11

Ruby Red Tinted Clearcoat Metallic¹

1

2 3 4

5 6 8 9 10 11

Deep Impact Blue

1

2 3 4

5 6 7 8 9 10 11

Magnetic

1

2 3 4

5 6 7 8 9 10 11

Guard

1

2 3 4

5 6 7 8 9 11

Black

1

2 3 4

5 6 7 8 9 10 11

9, 10 – Premier Trim With Color Accent Group 11 – 50 Years Appearance Package

¹Additional charge.

Colors are representative only. See your dealer for actual paint/trim options.

Bring these colors to life



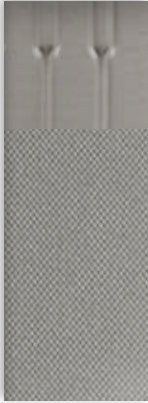
Interiors



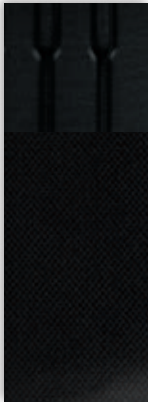
1 Ebony Cloth



2 Ebony Cloth



3 Ceramic Cloth



4 RECARO® Ebony Sport Cloth



5 Ebony Leather with Perforated Inserts



6 Ceramic Leather with Perforated Inserts



7 Dark Saddle Leather with Perforated Inserts



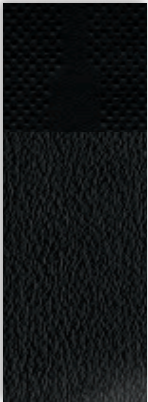
8 RECARO Ebony Sport Leather with Perforated Inserts



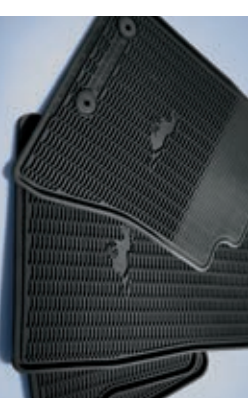
9 Ebony Vinyl with Perforated Leather Inserts



10 Red Line Vinyl with Perforated Leather Inserts



11 Raven Black Vinyl with Perforated Leather Inserts



GT fastback in Ingot Silver accessorized with 19" Ebony Black-painted aluminum wheels, wheel center caps, wheel lock kit, and Ford Custom Graphics by 3M Original Wraps¹

All-weather floor mats

Remote Access

Sport pedals

Full vehicle cover

Exterior

Full vehicle covers

Hood protector¹

Rear spoilers

Interior

Ash cup/coin holders

Cargo organizers and protectors

Carpeted floor mats

Door-sill plates

Gear indicator shift knob¹

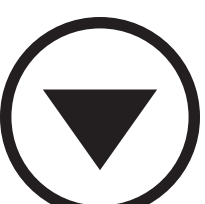
Interior light kit

Tablet cradle¹

Electronics

Portable DVD rear-seat entertainment systems¹

See other accessories



FORD ACCESSORIES

accessories.ford.com

¹Ford Licensed Accessory.

Learn more about
your Mustang



2015 MUSTANG



Go Further

ford.com

New Vehicle Limited Warranty. We want your Ford Mustang ownership experience to be the best it can be. Under this warranty, your new vehicle comes with 3-year/36,000-mile bumper-to-bumper coverage, 5-year/60,000-mile Powertrain Warranty coverage, 5-year/60,000-mile safety/restraint coverage, and 5-year/unlimited-mile corrosion (perforation) coverage – all with no deductible. Please ask your Ford Dealer for a copy of this limited warranty.

Roadside Assistance. Covers your vehicle for 5 years or 60,000 miles, so you have the security of knowing that help may be only a phone call away should you run out of fuel, lock yourself out of the vehicle or need towing. Your Ford Dealer can provide complete details on all of these advantages.

Ford Credit. Get the ride you want. Whether you plan to lease or finance, you'll find the choices that are right for you at Ford Credit. Ask your Ford Dealer for details or check us out at fordcredit.com.

Ford Extended Service Plan. For a purchase or lease, the Ford Extended Service Plan (ESP) gives you peace-of-mind protection designed to cover key vehicle components and protect you from the cost of unexpected repairs. Ask your dealer for a Ford ESP, the only service contract backed exclusively by Ford and honored at all Ford Lincoln dealerships.

Insurance Services. Get Ford Motor Company quality in your auto insurance. Our program offers industry-leading benefits and competitive rates. Call 1-877-367-3847, or visit us at fordvip.com for a no-obligation quote. Insurance offered by American Road Services Company (in CA, American Road Insurance Agency), a licensed agency and subsidiary of Ford Motor Company.

Ford Original Accessories will be warranted for whichever provides you the greatest benefit: 24 months/unlimited mileage, or the remainder of your Bumper-to-Bumper 3-year/36,000-mile New Vehicle Limited Warranty. Ford Licensed Accessories (FLA) are warranted by the accessory manufacturer's warranty. FLA are designed and developed by the accessory manufacturer and have not been designed or tested to Ford Motor Company engineering requirements. Contact your Ford Dealer for details and/or a copy of all limited warranties.

Comparisons based on competitive models (class is High-Power Sports Cars), publicly available information and Ford certification data at time of release. Vehicles may be shown with optional equipment. Features may be offered only in combination with other options or subject to additional ordering requirements/limitations. Dimensions shown may vary due to optional features and/or production variability. Information is provided on an "as-is" basis and could include technical, typographical or other errors. Ford makes no warranties, representations, or guarantees of any kind, express or implied, including but not limited to, accuracy, currency, or completeness, the operation of the information, materials, content, availability, and products. Ford reserves the right to change product specifications, pricing and equipment at any time without incurring obligations. Your Ford Dealer is the best source of the most up-to-date information on Ford vehicles.

After trial period expires, SiriusXM Satellite Radio, SiriusXM Traffic and Travel Link subscriptions are sold separately or as a package and are continuous until you call SiriusXM to cancel. See SiriusXM Customer Agreement for complete terms at www.siriusxm.com. SiriusXM Traffic and Travel Link available in select markets. For more information, see www.siriusxm.com/travelink or www.siriusxm.com/traffic. Sirius XM and all related marks and logos are trademarks of Sirius XM Radio Inc. Brembo is a trademark of Brembo S.p.A. HD Radio is a proprietary trademark of iBiquity Digital Corp. iHeartAuto is a trademark owned by Clear Channel Broadcasting, Inc. All third party uses are authorized under license. iPod and iTunes are trademarks of Apple Inc., registered in the U.S. and other countries. PANDORA, the PANDORA logo, and the Pandora trade dress are trademarks or registered trademarks of Pandora Media, Inc. Used with permission. RECARO is a registered trademark of RECARO Betzoldings-GmbH. The Bluetooth word mark is a trademark of the Bluetooth SIG, Inc. TORSSEN is a registered trademark of JTEKT Corporation.

Follow Ford:

